



# **FINE ARTS MANUAL**

**July 2018**

## **Table of Contents**

- **General Rules**
- **Points, Trophies & Awards**
- **Entry and Student Eligibility**
- **Fine Arts League Fees**
  
- **CREATIVE ARTS**
  - ❖ **One-Act Play**
  - ❖ **Chorus**
  - ❖ **Honors Chorus**
  - ❖ **Spring Literary**
  - ❖ **Visual Arts**
  - ❖ **Instrumental Music Competition**
  
- **ACADEMIC ARTS**
  - ❖ **Rube Goldberg**
  - ❖ **Robotics**
  - ❖ **Math Bowl**
  - ❖ **History Bowl**
  - ❖ **Chess**
  - ❖ **Quiz Bowl**
  - ❖ **Lincoln Douglas Debate**
  - ❖ **Science Fair**
  - ❖ **Middle School Spelling Bee**
  - ❖ **Middle School Geography Bee**
  
- **Middle School Academics Day**
- **Elementary Academics Day**
- **GICAA Middle School of the Year**

## I. General Rules

- Each school entering any Fine Arts event, must submit an online roster for all students participating.
- There will be an online roster process that we be introduced before school starts in the fall of 2017
- When there is an event that needs a time limit established, there will be a timekeeper provided.
- A stopwatch shall be provided for each timekeeper. The timekeeper will be in plain view of each contestant. Cards will be used to let the contestant know when the minimum time limit has been reached and when they are within one minute of a time's up.
- The timekeeper will stand up and give an audible STOP when the time limit is reached.
- If the contestant does not stop when the time limit is reached there will be a point deduction.
- There will be a written record of each contestant's time on the judge's evaluation sheet.
- All Coaches must inform parents that they are only allowed to videotape their child and no one else's.
- Participants are not allowed any type of electronics in the performance and/or competition areas.
- A contestant may only participate in two individual and two group performances.
- In GICAA Fine Arts Events, all schools will be identified by a number as no school's or contestant's names will be used until all judge's evaluation sheets have been turned in and tabulated.
- Rules and evaluation forms will be sent to judges two weeks prior to region and state competitions.
- Each contestant will be judged based on merit according to the points set out as essential for judging each particular contest.
- Because of the copyright laws in place, no music duplication will be permitted. A letter from the publisher authorizing duplication is acceptable. If the music is purchased via the internet from the publisher, it must include proof of purchase or a receipt.
- All mistakes due to errors in arithmetic or made contrary to the rules of the contest and discovered before or after the decision of the judges, shall be corrected. Corrections in the Region and State Meets must be made within 48 hours of the meet.
- There will be no profanity, no lewd or sexual gestures in any event. If anything of this nature is presented it will be an automatic disqualification for that participant/s. Everything that is presented shall be presented in a Christ-like manner. A GICAA Staff Member will be at every region and state event.

- There is no charge for admission for the audience members at region, however State Championship can charge up to \$5.00 per person.
- If a school qualifies for state and decides not to participate and doesn't inform the league within 48 hours of state meet, there will be a \$50.00 fee charged to the school. If more than 48 hours is given, the next person in line will be moved up to state and the cancelling school will not incur a fine.
- All students/participants and audience members are discouraged from wearing any clothing with school logo.
- Region venues must contain enough seating for ALL schools to observe performances at one time.

## II. Points, Trophies & Awards

- Championship and 1<sup>st</sup> Runner-Up trophies will be presented for all Fine Arts, High School Events
- The state competitors will consist of 1<sup>st</sup> and 2<sup>nd</sup> place winners in each event from the region meet unless the region contains three schools (competitors) or less-only one winner advances.

## III. Entry and Student Eligibility

- Each school that is wanting to enter a GICAA Region Fine Arts Event, must let the Director of Fine Arts know in writing 60 days prior to that event in order to secure placement/hosts for region in a timely manner.
- It is the responsibility of the GICAA Fine Arts Director to determine if a contestant is eligible to participate. Rosters are submitted to the league office and sanctioned on the following form, which is found under the forms portion on the website:  
<http://gicaaarts.com/wp-content/uploads/Fine-Arts-Roster.pdf>
- If you are in Division II and using AES participants, please fill out this additional form and submit with the roster:  
<http://gicaaarts.com/wp-content/uploads/2014/06/AES-Form.pdf>

### Eligibility Requirements

- o Member schools are responsible for the Certification of Birth of their students participating in literary & fine arts competitions if there is a need for verification.
- o Alternative education students (AES) who are not enrolled into a member school are required to present and turn in a copy of their Birth Certificate and report card to the league office for allowance to participate in any of the athletic competitions offered by the GICAA, LLC. ( maximum of three AES students total per school)

- o A student who turns 19 prior to May 1<sup>st</sup> preceding the school year of participation will not be eligible to participate in fine arts the following school year.
- o Students must take three full time classes in high school to be considered as a full time “enrolled student” for division two. If only taking three classes, he/she must be passing all three classes to be eligible to participate. If the student is taking five classes, he/she must be passing four classes to be eligible to participate. If the student is taking four classes, he/she must be passing three classes to be eligible to participate.
- o A student must be taking the appropriate number of subjects each year to be on track, from the school they are attending or from the homeschool program they are enrolled in, in order to remain eligible to graduate in four years.
- o If a student is not eligible after the first semester he/she may be allowed to become eligible in the third nine weeks of the second semester.
- o Summer school credits are limited to two credits. Cases with extreme circumstances can be appealed and this rule will not have any effect on units schools count toward graduation.
- o The eight (8) semester rule begins in the 9<sup>th</sup> grade. (This is for all full time enrolled students, homeschool students and AES athletes.) This means the student must complete eligibility within eight (8) consecutive semesters from the student's first day of 9<sup>th</sup> grade. Once a homeschool student has taken the ninth grade homeschool test, they have three years left of eligibility in the GICAA, LLC. In other words, the varsity player has four years of eligibility to compete on a varsity level.
- o Students are only eligible when listed on a properly certified eligibility roster filed with the GICAA, LLC league office. Eligibility will be effective on the date sanctioned by the GICAA, LLC league office.
- o If a parent is a full time employee of a GICAA, LLC member school and changes schools as a full time employee, then the child of the employee can compete at the new school without losing eligibility. This school will then become that student's home base for athletics. (Full time employee is considered 20 or more work hours a week)
- o Once a homeschool student has taken the 12<sup>th</sup> grade homeschool test and passed, he/she is no longer eligible to play sports and participate in Literary & Fine Arts for a GICAA, LLC member school. All other students who are considered AES participants must meet the same eligibility as an enrolled student.
- o Transfer Students- If a student leaves a GICAA, LLC member school and goes to another GICAA, LLC member school without a legitimate move, that student is ineligible for participation for one full calendar year.
- o Students in grades 7<sup>th</sup>-12<sup>th</sup> may participate in Fine Arts competitions.

## IV. 2018-2019 Fine Arts Fees

- One-Act Play-\$ 450.00
- Spring Literary-\$ 650.00
- Robotics-\$ 350.00 ( First year in program-\$150)  
(Includes 2 HS Teams & 2 MS teams) More upon request and as slots allow
- Chorus-\$ 250.00-1st group; \$150 each additional team
- Honors Chorus: \$20 per student (includes lunch)
- Visual Arts-\$ 250.00 HS, MS, Elementary  
\$150.00 MS &/or Elem only
- Instrumental-\$ 250.00 for any group
- Chess- \$100 for first team of 4 players; \$50 for each additional team
- High School Bowl Series:  
(Quiz Bowl, History Bowl, Math Bowl)
  - \$250.00 each/\$100 for each additional HS team
  - With One Act & Literary-All HS Bowls & Chess for \$400\*
  - With One Act OR Literary- All HS Bowls & Chess for \$500\*
- Middle School Academic Series:  
(Quiz Bowl, History Bowl, Math Bowl, Spelling Bee, Geography Bee, Chess)
  - \$ 150.00 each for 1 team/\$100 each additional team in Bowl events
  - All six-\$ 500.00 if sign up in the Fall\*
- Elementary Academic Series:  
(Quiz Bowl, Math Bee, & Spelling Bee)
  - \$ 150.00 (introductory price) for the whole day. See rules & website for format.
- Science Fair:
  - \$ 150.00 (introductory price) for 2 MS & 2 Elem
- Debate:
  - \$200 for a team of 2; \$50 for each additional team of 2

**\*To receive package pricing all events MUST be signed up and paid for in the fall billing cycle!!!!**

# Creative Arts

## One-Act Play

Each school wishing to enter the One-Act Play Competition must notify the GICAA League Administrator in writing no later than August 15<sup>th</sup> of each school year.

### I. Considerations at State One-Act Plays

- Schools will be divided by 7<sup>th</sup>-12<sup>th</sup> enrollment numbers for Class-A & Class-AA 7<sup>th</sup>-12<sup>th</sup> grade students are allowed to compete
- A schedule for unloading will be provided by the GICAA League Office prior to the State competition.
- Schools will have 15-minutes from the time the previous school clears the wings until they should be ready to begin.
- Spiking of the stage is prohibited.
- Microphone use by speakers or singers on stage is prohibited.
- Oral critiques will be given at Region for the top two schools moving on to state; however, no oral critiques will be made at the State competitions.
- Videotaping is permitted only with advanced knowledge and approval of Event Coordinator or Director. Should permission be granted to videotape, it may only be done with one's own contestant(s) or school. Videotaping of another school's performance is strictly prohibited.

### II. Contest Rules

- Schools may enter a cutting or abridgement of a play as their One-Act Play selection. There will be NO musicals allowed.
- Proof of performance rights and payment of royalties must be submitted to the Region Literary Chair prior to the Region One-Act Play Competition. Schools performing a cutting or abridgement of a play must also provide written permission from the publisher to cut the play. No play will be allowed to perform without proof of royalties and/or rights paid. GICAA shall in no way be responsible for any faults that may occur with rights and/or royalties.
- Schools performing original scripts or plays in the public domain shall be exempt from the rule regarding rights and royalties.
- No school shall be permitted to perform the same play selection in consecutive years.
- Each school will be given 55-minutes to set-up, perform, and strike its production. Any play which exceeds the above time limit will have points deducted. 5 points will be deducted for every minute or partial minute the group goes over the 55 minutes.
- Schools should turn in a cast list with names and characters to a GICAA official on the day of region and state.

- There are no restrictions on costumes, properties, and scenery. Properties are defined as any handheld items used on stage apart from the scenery. Scenery is defined as the physical structures used to stimulate an environment set forth in the play including furniture, platforms, wagons, flats, etc.
- Timing will be as follows:
  - Student steps onto center stage and will announce, the school number (order), the name of the play and an audible “Start Time”
  - The actors can then begin placing items on the stage
  - Once the play has concluded and the stage is cleared, the student will then step back onto center stage and give an audible “Stop Time”.
  - This time will be recording on the judge’s evaluation sheets.
- No ineligible person shall be visible on stage in the acting area as part of the production nor shall offer conspicuous direction once the school’s number has been called. This also includes no directors on stage in the acting area to start or stop the play. An adult may be an accompanist on a musical instrument if that person is off stage. An adult may be the lighting and/or sound person.
- If a play is disqualified, by the GICAA, during competition, the school will incur a fine of \$50.00 from the GICAA.

### III. Judges

- There shall be three (3) judges for this event.
- Judges shall sit apart during the performances. They shall score and give written comments without conferring with one another or any other person. Judges may discuss individual, group, and production awards after all performances have been completed and team score sheets have been turned in for tabulations. Judges may confer to choose best actor/actress.
- Judges shall hold all evaluations sheets until after all schools have performed. The League Official will total the evaluations at the end of all performances. The rankings must be in line with the total scores. The rankings will be averaged for placement.
- Judges shall avoid contact with directors or cast members until after all schools have performed.
- A league official will be present and can and will disqualify a play for any and all of the following:
  - Profanity
  - Graphic lewd gestures towards other actors and/or the audience
- Special attention should be paid by the directors to gratuitous characters and actions that do not glorify our Lord. (When in doubt...Don’t do it!)
- If a league official has an emergency and is unable to make it to the region event, he or she will appoint someone at the host sight to be



## IV. Awards

- Starting in 2016, the winner and runner-up in region and state will be determined by adding the three judges scores of the ranking score and total points, divided by three, then divided by two for a final score. Highest final score determines the winner.
  - o Rankings will receive the following points:
    - 1<sup>st</sup>-100 points
    - 2<sup>nd</sup>-95 points
    - 3<sup>rd</sup>-90 points
    - 4<sup>th</sup>-85 points
    - 5<sup>th</sup>-80 points
    - 6<sup>th</sup>-75 points

*(Example: School #1-Judge 1 gave a rank of 2(95), Judge 2 gave a rank of 4(85) , Judge 3 gave a rank of 2(95)- 95+85+95=275 ÷3=91.66÷2=45.83. Total points-Judge 1 gave (92), Judge 2 gave (83), Judge 3 gave (90) 92+83+90=265÷3=88.33÷2=44.17, therefore, School #1 has a final point count of 90.*

- Champion and First Runner-Up trophies will be presented. Plaques will be awarded to the five (5) Best Performances regardless of gender.
- The Champion and First Runner Up from each Region will advance to the State One-Act Play Competition.
- In a region where there may only be three or less competitors in Class A or Class AA, only the region champion will be awarded and advance to state.

## V. Hosting Requirements

- An adequate backstage for storing props and for shifting between shows
- A designated dressing room
- Judge’s tabulation room
- We suggest a hospitality area for judges
- Sound system is preferred and lighting is recommended

### Host Timeline

|                                     |   |
|-------------------------------------|---|
| <b>12-20 Weeks from Region Date</b> | select, contract and confirm venue            |
|                                     | begin calling judges                          |
|                                     | initial contact with schools in region        |
|                                     | offer walk through day to region participants |
|                                     | Venue:  |
|                                     | -stage size                                   |
|                                     | -wings  |

|                                 |  |
|---------------------------------|--|
|                                 | -curtains  |
|                                 | -audience seating (set up and size)                                      |
|                                 | -load in/out   |
|                                 | -lighting  |
|                                 | -sound formatting-suggest three formats (cd, ipod, thumb drive, etc)     |
|                                 | -staging area for next shows   |
|                                 | -multiple dressing rooms   |
|                                 | -judges hospitality room   |
|                                 | -tabulation room for scoring   |
|                                 | -suggestions for eating lunch close to venue                             |
| <b>8 Weeks from Region Date</b> | confirm judges   |
|                                 | ask schools for show time lengths for scheduling                         |
|                                 | organize parent volunteers for hospitality                               |
| <b>4 Weeks from Region Date</b> | draw for order of performances with directors                            |
| <b>2 Weeks from Region Date</b> | send rules & evaluation sheets to judges                                 |
|                                 | get show/script permission from schools                                  |
|                                 | send judges bios, directions, schedule to schools                        |
| <b>1 Week from Region Date</b>  | confirm site, judges, schools, volunteers                                |
|                                 | prep directors packages  |
| <b>Day Before Region</b>        | prep venue/hospitality room/signs  |
| <b>Day of Region</b>            | Welcome, prayer, announcements, rules, judges meeting, directors meeting |

## Good Resources for Play Selections

- Eldridge Publishing [www.histage.com](http://www.histage.com)
- Dramatists Publishing [www.dramatists.com](http://www.dramatists.com)
- Samuel French [www.samuelfrench.com](http://www.samuelfrench.com)
- Pioneer [www.pioneerdrama.com](http://www.pioneerdrama.com)
- Dramatic Publishing [www.dramaticpublishing.com](http://www.dramaticpublishing.com)
- Heuer Publishers [www.hitplays.com](http://www.hitplays.com)
- Discover Plays [www.playscripts.com](http://www.playscripts.com)
- Brooklyn Publishers [www.brookpub.com](http://www.brookpub.com)
- JD Publishing [www.jddramapublishing.com](http://www.jddramapublishing.com)

# Chorus Competition

The four categories for the Choral Festival include:

## **Middle School**

Ensemble: 8-16 participants

Choir: 17 and above participants

## **High School**

Ensemble: 8-16 participants

Choir: 17 and above participants

## I. Hosting Information

The hosting venue must provide an appropriate performance setting, including safe choral risers, a spacious hall/auditorium, a tuned piano in good condition and acoustics that lend well to choral activities. The GICAA will provide the host school with \$\$\$ for judges. Region venues must contain enough seating for ALL schools to observe performances at one time.

## II. Student Participation

This event is for students in 6<sup>th</sup>-12<sup>th</sup> grade. 6<sup>th</sup>-8<sup>th</sup> grade students should participate in the middle school division because of their vocal range and quality. At the discretion of the director a few older middle school students may combine with high school students to meet the minimum participant numbers. However, 9<sup>th</sup>-12<sup>th</sup> grade students should participate in only high school categories.

## III. Music Selection

- Selections should be two contrasting pieces, one sacred and one standard repertoire. For examples, please refer to the ACDA and GMEA websites.
- The songs should focus on a choral sound, rather than on solos. If the song includes a solo, it should not be the major portion of the song.
- The songs must be sung in the language in which they are printed in the music provided for the judges.
- All selections must be memorized.
- There will be no soundtracks allowed, only live accompaniment as indicated in the music.
- All music must be from published material.
- No alterations to the accompaniment are allowed.
- No microphones will be used.

- One original copy of music must be provided for each judge. If it is a downloaded copy, proof of purchase must be included with the music.
- No Chorus Director is allowed to be the accompanist
- Each School will supply their own accompanist
- A source for purchasing sheet music:  
<http://www.jwpepper.com/sheet-music/welcome.jsp>

#### IV. Dress Code

Performance attire should be appropriate for concert setting. It can include school uniform or traditional concert dress.

#### V. Performance & Judging

- Groups will have a 20 minute performance time, with a warm-up immediately prior to their performance slot in a separate room that contains a piano.
- The Directors will have the option to begin with a one minute balance check to be included in their 20 minutes.
- Scoring is based on a 100 point scale. There will be an awards ceremony at the conclusion of the event.
- The top two scoring groups from each region will advance to the State level based on judging scores.
- At the State level, awards will be presented for the Georgia State Championship for High School Choral Performance in Large and Small Groups, and Championship trophies for Middle School Performance in Large and Small Groups.
- The judges should be asked to stay until after the awards to discuss any comments notated on the score sheets with the school's director.

#### VI. Chorus Director Etiquette

- Upon entering the performance stage, make sure that your students are situated correctly on the risers and that the accompanist can see you.
- Use none, any, or all, of one minute to make sure that your balance between the choir and the piano is optimal. This can be accomplished by having a few measures of a separate piece prepared to sing while the piano accompanies.
- Once you are prepared, turn and face the judges. Present your school number (assigned when you arrive to the event), the name of the first selection, and the name of the composer/arranger. Then, turn to your choir to begin performance of that piece.
- Upon completion of your first piece, turn to acknowledge the judges and wait for their signal. When they motion that they are ready for your second selection, introduce the name of the second selection and the name of the composer/arranger, then turn to begin performance of that piece.
- Upon completion of your second piece, turn to acknowledge the audience and their applause. Appropriately indicate the accompanist and the members of the choir, and then have your choir immediately exit the stage.

# Honors Chorus

- Each school may nominate up to 2 students each (soprano, alto, tenor, bass) to perform at competition day for Chorus. (GICAA will put a nomination form on the website) (grades 7th -12th)
- Timeframe of the day  
8:30-10:30: Honors Chorus practice & perform before competition (music workshop for other competitors)  
Lunch break  
11-3 Choral Competition
- GICAA will send music and track info for students to learn the music ahead of time, divide into sectionals with local music directors to help prepare students (this will be attempted)
- Concert attire: All black: No jacket required
- The GICAA plans to hire a guest clinician to coach the group and select the music ahead of time.
- Schools or individual students will purchase their own music via JW Pepper and link provided by the GICAA.
- Students are responsible for learning the music ahead of time to the best of their ability and arriving on time to practice the music before the concert.

# Spring Literary

## I. General Rules for Spring Literary

- If a league official has an emergency and is unable to make it to the region event, he or she will appoint someone at the host sight to be in authority.
- A student may only perform in two individual events and two group events for a maximum of four events.
- In the Speaking, Vocal and Piano events, contestants must perform the same piece at Region and State.
- Each region in the GICAA will determine a first and second place winner for each event to represent that Region in the State Meet. Any ties that occur from region will need to be resolved prior to the State Meet.
- There will be no minimum number of events that a school must enter in the Region Meet.
- The GICAA will appoint a three member Appeals Committee
- Students are encouraged to dress modestly for every event at all times in Spring Literary.
- A league official will be present and can and will disqualify a play for any and all of the following:
  - a. Profanity
  - b. Graphic lewd gestures towards other actors and/or the audience
- Special attention should be paid by the school coordinator to gratuitous characters and actions that do not glorify our Lord. (When in doubt...Don't do it!)
- If a league official has an emergency and is unable to make it to the region event, he or she will appoint someone at the host sight to be in authority.

**We want to honor God in all aspects of all events including adhering to copyright laws! Please be aware of all precautions and rules regarding use of photocopies.**

## II. Oral Interpretation-Dramatic, Humorous & Duo

- Explanation: The art of interpretation is to be regarded as recreating the characters in the story presented and making them life-like to the audience.
- Divisions: Separate contests will be conducted in Dramatic & Humorous & Duo Interpretations. Each will be presented as memorized selections, without the use of objects, props, costumes, musical selections, hats, scarves or sound effects, etc.
- Either gender is allowed to participate.

- Re-Use: No contestant or school will be allowed to perform the same selection in consecutive years in the GICAA.
- Plagiarizing: In all interpretations, Coaches are encouraged to create a presentation of an original nature and are refrained from imitating a published performance like Youtube, etc. If a judge recognizes a piece that has been copied from a media presentation that participant could have severe points deducted.
- A league official will be present and can and will disqualify a play for any and all of the following:
  - Profanity
  - Graphic lewd gestures towards other actors and/or the audience
  - Please pick a subject that could not be construed as awkward or uncomfortable for the opposite sex.
- Judges will have 24 hours from region to look at Youtube to decide if there is plagiarism.

### III. **Definitions of a complete script would be:**

- A photocopy of every page from which any line of the cutting is taken; pages are to be in the order in which they are performed.
- All words used from the script should be highlighted and all other words left untouched. If the entire script is used no highlighting is necessary.
- Any word changes to eliminate profane language and any additions/subtractions for transition must be clearly marked in ink.

#### **Proof of publication provided by the coach or supervising adult should be:**

An original printed source with an ISBN#, ISSN# or IFFN#. If these options are not available, then proof that the material was obtained commercially from the author, literary agent or publisher or is publicly available and verifiable for download, purchase or use on the internet by any individual.

**Failure to provide a complete script and/or original published source can and will result in a disqualification.**

- Introduction: During the presentation the contestant/team must name the author and the book or magazine from which the cutting was made. Contestants may recite the title and author of the piece and give a brief introduction of the piece. In interpretation, the teaser must be from the same script or piece as the one being performed.
- Narration: If the selection contains narration, either or both of the performers may present the narration. Narration, if included, should be vivid and animated so as to be an interesting and integral part of the story rather than just filler between portions of dialogue.
- Focus: In both dramatic and humorous interpretation, use of focal points and/or direct contact with the audience should be determined by the requirements of the literature being presented. In a Duo Interpretation, focus may be direct during the introduction (the performers may look at each other), but must be indirect (off stage to the audience) during the performance itself. The performers may not touch each other at any time during the performance, nor make eye contact.

Performance should be limited to the performance space and performers may not enter the audience at any time during presentation.

- A single participant in interpretation will be allowed a 3' x 3' space in which to perform. In the case of a duo interpretation, each participant will be allowed a 3' x 3' space each. Region hosts will mark the space.
- Contestants are evaluated on poise, quality and use of voice, inflections emphasis, pronunciation, enunciation, physical expression and especially the ability to interpret characters correctly and consistently. The final test of good interpretation is the ability to use all of these factors so successfully and unobtrusively that the hearer forgets that this is a contest and in a created atmosphere is carried away to the time and place of the story being unfolded.
- Order of Performances: At the regional meetings, school names will be drawn to determine the order for the state meet.
- Timing: The presentation maximum will be 10 minutes and there will be no minimum time. Time cards will be used to let the contestants know how much time they have left.
- Audience: Audiences will be permitted based on available space. Once a performance has started, the doors will be closed and no other entries will be allowed. There should always be a monitor in the room to maintain control of the exits.
- Judges: There will be two judges at each event.
- Awards: Medals will be awarded to the contestants who place first in this event.

## IV. Selections

- Selections: Selections must be cuttings from published, printed novels, short stories, plays or poetry. No recorded material that is not published will be allowed. Monologues are acceptable in either interpretation.
- Source: A cutting must be a single work of literature: one short story or one play or one novel or one or more poems from the same published volume. The original published source must be made available at the event as well as a complete script of the cutting used.
- Adaptations: Adaptations may only be used for the purpose of transition. The gender stated by the author must be honored. However, a female contestant may play male role and a male contestant may play a female role.
- Caution: It is the responsibility of the coach and participant to determine that the cutting that is being performed meets GICAA rules.
- Judging considerations: The selection should be judged for its appropriateness as contest material and its suitability to the particular contestant using it. The use of good literature should be noted favorably and a selection devoid of literary merit graded lowest.
- This website is good for information and help with oral interpretation:  
<http://www.speechgeek.com/>



## V. Personal Essay

- Each school may enter one male or female contestant. Each contestant can enter one essay contest.
- The GICAA office will prepare a list of topics for the Region and State Literary Competitions.
- All essays will be written in ink.
- Two hours will be given for writing the essay.
- No other materials, coaching or dictionaries will be allowed in the room.
- The essays will be judged on the following:
  - o Originality
  - o Form
  - o Vividness
  - o Voice
  - o Style

Verbal and grammatical correctness, spelling and punctuation will be considered however, they are of less importance than the interest and general effectiveness of the whole composition. Points will be deducted if there is evidence found of a pre-memorized composition.

- There will be two judges for the essay event. Judges will score and give written comments without discussing with one another or anyone else. Judges will hold all evaluation sheets until after all essays have been scored.
- The sum of the two judges point totals will determine first, second, third and fourth place winners.
- Essay judges are approved to be off sight in a controlled atmosphere
- The contestant placing first will receive a medal.

## VI. Argumentative Essay

- Each school may enter one (1) contestant. The contestant may be either a boy or a girl. Contestants may enter only one essay contest, i.e. Argumentative; Personal; or Rhetorical.
- The GICAA Office shall prepare a list of topics for the Region and State Literary Meets on current state, national and international policies discussed in periodicals published since September 1 of the current school year. The current year and preceding year's debate topics will not be considered.
- The contestants from each school shall write upon any of the subjects provided.
- All essays will be written in ink.
- Two (2) hours will be given for writing the essay.
- Supplemental published materials will not be allowed. The use of a dictionary and coaching during the contest is not permitted.

- The essay shall be judged by the thought, the order, the arrangement, and the elements of style. Verbal and grammatical correctness, spelling, and punctuation shall be considered of less importance than the interest and general effectiveness of the whole composition, but should be weighed. It is a ready writer's contest and evidence of pre-memorized composition shall weigh heavily against the contestant.
- There shall be two (2) English teachers/judges for this event. Judges shall score and give written comments without conferring with one another or any other person. Judges shall hold all evaluations sheets until after all essay have been scored.
- The sum of the point totals from the two judges shall determine first and second place.
- A medal will be awarded to the contestant placing first in this event at region and a plaque will be awarded at state.

## VII. Rhetorical Analysis Essay

- Each school may enter one (1) contestant. The contestant may be either a boy or a girl. Contestants may enter only one essay contest, i.e. Argumentative; Personal; or Rhetorical.
- The GICAA Office shall select an excerpt from a prose work either, a novel or short story. Students are to read the passage and write an essay analyzing for narrative and literary techniques of the strategies the author uses to achieve his or her goal or purpose of writing their piece.
- All essays will be written in ink.
- Two (2) hours will be given for writing the essay.
- Neither coaching nor supplemental materials will be allowed. The use of a dictionary during the contest is not permitted.
- The essay shall be judged by the quality of the analysis of elements of the essay including how the writer interprets, develops, and organizes the essay, as well as style and correctness.
- There shall be two (2) judges for this event. Judges shall score and give written comments without conferring with one another or any other person. Judges shall hold all evaluations sheets until after all essay have been scored.
- The sum of the point totals from the two judges shall determine first, second, third, and fourth place winners.
- A medal will be awarded to the contestant placing first and second place at region and plaques at state.

## VIII. Spelling

- Each school can enter one contestant.
- Contestants will take a written test consisting of 125 words total provided by the GICAA league office. The last 25 will be for a tie-breaker only. Words are to be only written in ink. All of the words given in this and the regional contest will come from the *online Meriam Webster Dictionary*.
- Contestants will not be allowed to use scratch paper to write the word. They will only be allowed to write the word once on their exam paper.
- If the contestant makes an error, they are not allowed to start over on a new sheet.
- Contestants are only allowed one sheet for the exam.
- When judges are correcting papers, the following will count as errors:
  - Words written so poorly you cannot read them
  - Any word written with an “i” over a “c”
  - Any words left off
  - Any word that is scratched through, corrected and/or re-written
  - When a word can be spelled more than one way, the preferred spelling will be the correct spelling of that word. Any variation would be considered incorrect
- The 25 tie breaker words will only be used in the event of a tie and will only be graded one at a time between the tied individuals until a word is spelled incorrectly.
- The examiner will provide a definition and the word used in a sentence if a contestant asks for either one.
- There will only be one judge for this contest and the judge will hold all exams until they are all scored.
- The number of correctly spelled words will determine first, second, third and fourth places.

## IX. Piano

- Each school may enter one contestant.
- Each contestant is allowed a one minute warm up prior to his/her performance on stage
- Each host will provide a warm up room with a tuned piano
- Each contestant is limited to a 10 minute performance. The time will begin after the first note is played and does not stop in between selections.
- If the contestant exceeds the 10 minute time limit, there will be an immediate three points deducted and then two points deducted for every five seconds over the time limit thereafter.
- Contestants will choose two contrasting pieces from different time periods:
  - Baroque

- o Classical
  - o Romantic
  - o Contemporary (includes Impressionism)
- These pieces will be played from memory as no sheet music is allowed on piano.
- A good resource to select pieces from is GMEA <http://www.gmea.org/piano/> and MTNA <http://www.mtna.org/>
  - All music must be from published material.
  - A contestant will not be allowed to play the same piece in consecutive years.
  - Contestants will provide 2 copies of each piece of the music to the judges. One piece MUST be an original and the other can be a photocopy. The photocopy is considered a complimentary copy and MUST be destroyed after competition.
  - If only a photocopy of the music is being provided, the contestant must present a letter from the publisher authorizing duplication. Downloaded music will only be authorized with a proof of purchase.
  - Every contestant will only have one chance to perform.
  - Audiences will be allowed to this event.
  - There will be two judges for this event. The two judges will score and give written comments without discussing with one another and will hold all evaluation sheets until all contestants have performed.
  - Judges will score on the following:
    - o Accuracy-notes and time value
    - o Technique-fingering, facility & appropriateness-judge should be in plain sight of pianist.
    - o Rhythm-steadiness, tempo & freedom
    - o Interpretation-understanding of composition, expression marks, contrast & general effort
    - o Presentation-stage deportment, poise & stage personality
    - o Difficulty of piece
    - o The sum total of points from the two judges will determine first, second, third and fourth place winners.

**\*\*\*During the region meets, the judges will be asked to rank the competitors to aid in determining which contestants advance to State in the event there is a tie.**

## X. Solo

- Each school may enter one contest of either sex for a total of two contestants.
- Each contestant is limited to a seven minute performance. The time will begin after the first note is played and does not stop in between selections.
- If the contestant exceeds the seven minute time limit, there will be an immediate three points deducted and then two points deducted for every five seconds over the time limit thereafter.
- Two contrasting(tempo, mood, key, etc) selections from 2 different genres/repertoires listed below will be sung from memory, each will be an original vocal solo composition and not an arrangement of instructional or choral

pieces.

Students may select from the the standard repertory of the following:

Art song, Folk, Oratorio aria, Operatic aria or Broadway musical.

(appropriate repertoire lists can be found at [www.gmea.org](http://www.gmea.org) and [www.acda.org](http://www.acda.org))

- All music must be from published material.
- Soloists can sing acapella or use an accompanist. Students may use recorded music IF they cannot find an accompanist. The recorded music MUST have only 1 musical instrument and that must be the only instrument throughout the recording. Also, the school/student is responsible for providing the means to play and hear the recording. (Hosts will not be required to have audio capabilities.)
- Contestants will provide 2 copies of each piece of the music to the judges. One piece MUST be an original and the other can be a photocopy. The photocopy is considered a complimentary copy and MUST be destroyed after competition. Failure to do this will result in a 5 point deduction.
- If only a photocopy of the music is being provided, the contestant must present a letter from the publisher authorizing duplication. Downloaded music will only be authorized with a proof of purchase.
- No individual soloist will be permitted to perform the same piece consecutive years.
- Audiences will be allowed during performances.
- There will be two judges for this event. The two judges will score and give written comments without discussing with one another and will hold all evaluation sheets until all contestants and performed.
- The sum total of points from the two judges will determine first, second, third and fourth place winners.

**\*\*\*During the region meets, the judges will be asked to rank the competitors to aid in determining which contestants advance to State in the event there is a tie.**

## XI. Girls-Trio

- A Girls' Trio will be made up of three female vocalists and carry the following distinct parts:
  - o First soprano
  - o Second soprano
  - o Alto
- The music given to the judges must be written in SSA. These pieces must adhere to copyright laws.
- Each trio is limited to an eight minute performance. The time will begin after the first note is played and does not stop in between selections.
- If the trio exceeds the eight minute time limit, there will be an immediate three points deducted and then two points deducted for every five seconds over the time limit thereafter.

- Two contrasting selections will be sung from memory, each of which shall be appropriate for a small group of singers. One selection must be one of the following: art song, a chorale, folk song, madrigal, Broadway musical.
- Trios can sing acapella or use an accompanist. No recorded music is allowed.
- All music must be from published material.
- Contestants will provide 2 copies of each piece of the music to the judges. One piece MUST be an original and the other can be a photocopy. The photocopy is considered a complimentary copy and MUST be destroyed after competition. Failure to do this will result in a 5 point deduction.
- If only a copy of the music is being provided, the contestant must present a letter from the publisher authorizing duplication. Downloaded music will only be authorized with a proof of purchase.
- Choreography will be allowed, however, it will not be scored.
- No trio will be allowed to perform the same piece in consecutive years.
- Audiences will be allowed during performances.
- There will be two judges for this event. The two judges will score and give written comments without discussing with one another and will hold all evaluation sheets until all contestants have performed.
- The sum total of points from the two judges will determine first, second, third and fourth place winners.

**\*\*\*During the region meets, the judges will be asked to rank the competitors to aid in determining which contestants advance to State in the event there is a tie.**

## XII. Quartet

- A Boys' Quartet will consist of four male voices and carry the following distinct harmony parts:
  - First Tenor
  - Second Tenor
  - First Bass
  - Second Bass
- The music given to the judges must be written in TTBB. These pieces must adhere to copyright laws.
- Single A schools may compete with a mixed quartet of 2 boys and 2 girls. The music must be written in SATB.
- Each quartet is limited to an eight minute performance. The time will begin after the first note is played and does not stop in between selections.
- If the quartet exceeds the eight minute time limit, there will be an immediate three points deducted and then two points deducted for every five seconds over the time limit thereafter.
- Two contrasting selections will be sung from memory, each of which shall be appropriate for a small group of singers. One selection must be one of the following: art song, a chorale, folk song, madrigal, Broadway musical.

- All music must be from published material.
- Contestants will provide 2 copies of each piece of the music to the judges. One piece MUST be an original and the other can be a photocopy. The photocopy is considered a complimentary copy and MUST be destroyed after competition. Failure to do this will result in a 5 point deduction.
- If a copy of the music is being provided (in lieu of an original), the contestant must present a letter from the publisher authorizing duplication. Downloaded music will only be authorized with a proof of purchase.
- Quartets can sing acapella or use an accompanist. No recorded music is allowed.
- No quartet will be allowed to perform the same piece in consecutive years.
- Choreography will be allowed, however, it will not be scored.
- Audiences will be allowed during performances.
- There will be two judges for this event. The two judges will score and give written comments without discussing with one another and will hold all evaluation sheets until all contestants and performed.
- The sum total of points from the two judges will determine first, second, third and fourth place winners.
- **\*\*\*During the region meets, the judges will be asked to rank the competitors to aid in determining which contestants advance to State in the event there is a tie.**

### XIII. Extemporaneous Speaking

- **Divisions**-Separate contests will be held for United States Division and International Division; and National Forensic League (NFL) rules will apply.
- **United States Division** – will cover U.S. domestic and U.S. foreign policy.
- **International Division** – will cover the domestic affairs of foreign countries and the foreign affairs of all countries, including the United States.
- **Topics**-The GICAA Office shall prepare a list of topics for both the Region and State Literary Meets on current national and international policies discussed in periodicals published since September 1 of the current school year. The current year and preceding year's debate topics will not be considered.
  - i. The GICAA will release four broad topics two weeks prior to region literary competition to assist participants in preparation for extemporaneous speaking.
- b. **Explanation**-The extempore speech should not be regarded as a memory test of the material contained in any one magazine article, but rather as an original synthesis by the speaker of the current fact and opinion on the designated topic as presented by numerous sources. The contestant therefore should be held accountable for strict adherence to the precise statement of the topic drawn and discounted severely for shifting to some other phase of the topic on which s/he

might prefer to speak. The information presented should be well-chosen, pertinent, and sufficient to support the central thought of the topic. The best extemporaneous speech combines clear thinking, good speaking, and interesting presentation to establish a definite thought with respect to the subject chosen. Do not require a contestant speaking on a controversial subject to take a personal stand on that issue. S/He may do so, or s/he may elect to present both sides of the controversy as currently set forth in the public press. Judge him/her on the effectiveness with which s/he develops the subject according to his/her own plan.

- c. **Drawing-At State**, contestants will draw for positions (1-8) to determine the order of performance. Thirty (30) minutes before the contest is to begin, the first speaker shall draw three topics, choose one, and return the other two. The other contestants shall draw in like manner, in the order of speaking, at intervals of seven (7) minutes. The entire list of subjects shall be used for the drawing by each section.
- d. **Preparation**-As soon as a topic is chosen, the contestant shall withdraw and prepare a speech without consultation and without reference to previously prepared notes. Students may bring and consult published books, magazines, newspapers and journals or articles there from, provided:
  - They are originals or photocopies of the originals.
  - That original article or copy is intact and uncut.
  - There is no written material on that original or copy.
  - Topical index without annotation may be present.
    - A good websites to go to and save, file and print articles is:  
<http://prepd.in/>
    - <http://speechgeek.com/extemp/>
    - <https://www.facebook.com/extemp/>
    - New York Times “Upfront” Subscription <http://upfront.scholastic.com/>

No other material shall be allowed in the prep room other than stated above. Extemporaneous speeches, handbooks, briefs and outlines shall be barred from the extemporaneous preparation room. Underlining or highlighting in extemporaneous speaking will be allowed if done in only one color on each article or copy. No electrical retrieval device (i.e. laptops or electronic devices) may be used. IE: laptops, cell phones or any other electronic devices. Printed copies of information from “online” computer services may be used. Electronically retrieved evidence used in any NFL contest must conform to the citation standard of the Modern Language Association (MLA). The contest manager should monitor the students during their preparation time to assure that there is no consultation and that only allowable materials are used.

- **Notes**-Contestants may make notes during the preparation time, and may use one (1) 3”x 5” note card handwritten on the front only. Note card will be provided in the Prep Room and must be turned in to the judge after speech.



- **Recusal**-Contestants shall not leave the preparation area until dismissed by the Extemp. Proctor or Contest Manager. Consultation with any person other than the contest manager between the time of drawing and time of speaking is prohibited.
- **Profanity**-No profanity is allowed when using a quote.
- **Time Limit**-There is no minimum qualifying time for an extemporaneous speech. Do not penalize a contestant for brevity unless s/he fails to adequately cover the subject s/he has chosen. **Maximum time is seven (7) minutes.** Time cards will be used to inform contestants of time remaining and stop time. Proposed no penalty for slight overtime up to 30 seconds.

**NO podium will be used or provided**

- **Audiences**-Audiences are permitted based on space available at the site and at the discretion of the GICAA Executive Director. Once the performances have begun, audience members are not allowed to enter or exit the performance room during the performances. The contest manager or monitor shall have complete control over entry/exits during performances.
- **Judges**-There shall be two (2) speech judges for this event. Judges shall sit apart during the presentations. They shall score and give written comments without conferring with one another or any other person. Judges shall hold all evaluation sheets until after all the contestants have presented.
- **Awards**-Medals will be awarded to the contestants placing first in this event at region, plaques will be awarded at state.
  - **Points**- Points will be awarded as follows:
    - a. 1<sup>st</sup> Place-7 points
    - b. 2<sup>nd</sup> Place-5 points
    - c. 3<sup>rd</sup> Place-3 points
    - d. 4<sup>th</sup> Place-1 point

## Hosting Requirements

- Piano judges must be in direct sight of the pianist so that they can see the technique
- One person in charge of each event room to read the rules and get the competition started
- Host gives the rules and evaluation to the judges at least two weeks ahead of time before the region competition to review and have an understanding of what they are judging on
- Host should be consistent with warm ups offered to all pianists with equal amounts of time.
- A school cannot perform the same piece two years in a row in ALL events

## Hosting Timeline

|                                     |  |
|-------------------------------------|--|
| <b>Spring Literary Host Packet</b>  |  |
|                                     |  |
| <b>12-20 Weeks from Region Date</b> | select, contract and confirm venue                   |
|                                     | begin calling judges                                 |
|                                     | initial contact with schools in region               |
| <b>8 Weeks from Region Date</b>     | confirm judges                                       |
|                                     | ask region schools for volunteer monitors            |
|                                     |  |
| <b>4 Weeks from Region Date</b>     | Monitor packet prep:                                 |
|                                     | -stopwatch   |
|                                     | -judges sheets                                       |
|                                     | -pens, writing paper & topics                        |
|                                     | -rules   |
|                                     | -schedule  |
|                                     | -bright, colorful time cards: 5,3,2,1, 30 sec, STOP  |
| <b>2 Weeks from Region Date</b>     | send rules & evaluation sheets to judges             |
|                                     | send judges bios, directions, schedule to schools    |
| <b>1 Week from Region Date</b>      | confirm site, judges, schools, volunteers            |
|                                     | prep directors packages                              |
| <b>Day Before Region</b>            | prep venue/hospitality room/signs                    |
| <b>Day of Region</b>                | Welcome, prayer, announcements, rules, judges intros |
| <b>Venue</b>                        | Rooms:   |
|                                     | -spelling  |
|                                     | -essay writing                                       |
|                                     | -music room/auditorium with tuned piano              |
|                                     | -practice room with tuned piano                      |
|                                     | -interp & extemp                                     |
|                                     | -judges break room                                   |
|                                     | -tabulation room                                     |

# Instrumental Music Competition

Orchestra and Concert Band for Middle School 6<sup>th</sup>-12<sup>th</sup> grades

- Solo-Brass, Woodwind, String or Percussion-must perform level 3/intermediate piece or higher
- Small Ensemble 2-6
- Large Ensemble 7-16
- Orchestra (50% or more orchestra instruments)
- Concert Band (50% or more band instruments)

**Point system is being adjusted for 2018-19...coming soon!**

***School with highest total points wins the Grand Master Championship***

Each group will have 30 minutes to set up, perform and strike the stage. For every minute over 30, there will be a 5 point deduction from the total score.

Performance grade level I,II,III,IV,V,VI–These are the levels of graded difficulty in instrumental music. A repertoire list link will be provided can be found on the J.W. Peppers website:

<http://www.jwpepper.com/sheet-music/services-state-festival.jsp?state=GA&stategroup=&stategroupname=#state-info> to assist to directors in appropriate musical selections. Directors will choose two contrasting pieces. The following categories have been provided to accommodate groups that may perform at more than one level.

All music must be from published material.

In order to properly categorize your group, pieces must be selected from adjacent or same levels.

Competition levels are as follows: A, B, C, D, E

Graded Level:

A= I-II B= II-III C= III-IV D=IV-V E=V-VI

**Example:** If a group's' selections include a level I and a level II piece they are considered competition level A.

**Selections:** Directors will choose two contrasting pieces. You may use the list provided on the GICAA website to assist you.

**Concert dress** for instrumental GICCA events will consist of the uniform worn by students when performing formal concerts with their local school orchestra/ensemble

**Scoring:**

## Ratings

## Definitions

I. *Superior* -Reserved for uncommonly exceptional groups that stand out as having performances that are nearly flawless.

II. *Excellent*- Truly fine work; worthy of compliment and praise. Students are performing well.

III. *Good* -Performance demonstrates some good technical and musical achievements; however, improvement is needed to be considered excellent

IV. *Fair* -A moderate number of significant problems mar the desired positive effect of the performance

V. *Poor* -Many, severe problems mar the desired positive effect of the performance

All schools must provide 3 original scores that have numbered measure for the adjudicators. If you cannot provide an original score you must have a letter of permission from the publishers along with your copy. Students must perform with original parts. If you have to transpose some of your instrumentation you must specify that in the original score that is given to the adjudicators.

Hosting accommodations:

- Need to have a director's podium, chairs, stands, piano and percussion instruments provided on site.
- Judges will be provided with the best seats in the house for clear and balanced listening.
- Adequate warm-up and stage space.
- If school is using a piano as a part of their ensemble please specify.

# Visual Arts

## I. Events

- **Photography**-media-black & white, sepia, color, digital, etc. (12" x 24" max size)
- **Painting**-media-oil, water, acrylic, etc. (16.5 sq. feet max size)
- **Sculpture**-Three Dimensional-ceramic, clay, metal, papier-mache, plaster, soapstone, wood, etc. (max height of 6' tall including pedestal, no more than 4' wide)
- **Drawing**-media-pencil, charcoal, pastels, pen & ink (18" x 24" max size)
- **Mixed Media**-a combination of any of the processes above
- **Linoleum Block Print**- Entries may be any form of creative prints including but not limited to block print, monoprint, collagraph, serigraph, intaglio, or lithograph. (24" x 36" max size) **(High School only)**
- **Digital Illustration**-compositions rendered directly on the computer, starting with a blank workspace; photos can be used as references, but must not be part of the finished work. (24" x 36" max size)**(High School only)**
- **Graphic Design**-art with a commercial purpose, including but not limited to posters, album/CD covers, book jackets, programs, brochures, logos, business cards, advertisements, etc. Copies of existing work will not be accepted. Entry purpose should be indicated on the judge's evaluation form. (24" x 36" max size) Pieces must be mounted to black or white foam core and trimmed to size. **(High School only)**
- **Expressing Faith Through Art**- Any discipline-students will create a piece from any of the above categories which they feel is a demonstration of their faith.

## II. General Rules

- Judges will be assigned as follows:
  - Two judges for Photography-black & white, color or digital
  - Two judges for Sculpture
  - Two judges for Painting and Drawing
    - Each event will have a total of six judges
- Absolutely no obscene material of any kind-use of obscene material will cause an automatic disqualification
- No special lighting on exhibit
- Matt & faux matts are acceptable, no frames
- Every project must be completed during the school year and under the supervision of the Art Teacher

- A signed letter by the student and teacher certifying the art piece was completed by that student
- We will have region Art Festivals with the winners advancing to state. The GICAA will determine numbers based on participation.
- All work must be original to the student. No plagiarism or piracy as defined below.
  - Plagiarism (AP):** “It’s unethical, constitutes plagiarism, and often violates copyright law to simply copy a work of art (even in another medium) that was made by someone else and represent it as your own.”
  - Piracy (Mirriam-Webster):** ”The unauthorized use of another's production, invention, or conception especially in infringement of a copyright.”

### III. Trophies & Awards

- Medals will be awarded for the top four pieces in each of the five categories in each Region
- Those 20 pieces will then travel to the State Competition
- Each of the 20 pieces will be given points as follows:
  - 1<sup>st</sup> Place-7 points
  - 2<sup>nd</sup> Place-5 points
  - 3<sup>rd</sup> Place-3 points
  - 4<sup>th</sup> Place-1 point
- The school with the most points at Region and State will be awarded a first place trophy and the school with the 2<sup>nd</sup> highest points will be awarded a runner-up trophy

### IV. Entry and Student Eligibility

- Each school that is wanting to enter a GICAA Region Fine Arts Event, must let the Director of Fine Arts know in writing 60 days prior to that event in order to secure placement/hosts for region in a timely manner.
- Schools may enter at most 4 pieces per category and students may only enter 1 piece per category.
- The competition will be divided into elementary (grades 1-5) middle school (grades 6-8) and high school (grades 7-12) Seventh and eighth graders may enter their piece in only 1 division. Elementary and middle school will only be a region competition (no state level).
- It is the responsibility of the GICAA Fine Arts Director to determine if a contestant is eligible to participate. Rosters are submitted to the league office and sanctioned on the following form, which is found under the forms portion on the website: <http://gicaaarts.com/wp-content/uploads/Fine-Arts-Roster.pdf>

- If you are in Division II and using AES participants, please fill out this additional form and submit with the roster:  
<http://gicaaarts.com/wp-content/uploads/2014/06/AES-Form.pdf>

# Academic Arts

## Rube Goldberg

A Rube Goldberg Machine Contest (RGMC) is an event where students of all ages compete with the machines they have imagined, designed and created in a fun and competitive forum. The competitions encourage teamwork and out-of-the-box problem solving, in a fresh learning environment and level playing field. Remember, to compete in an RGMC all you need is a pile of junk and a great imagination!

GICAA in partnership with Horizon Christian Academy in Cumming is the Southeastern host for the national RGMC.

GICAA will follow all rules and registration information with the national site.  
<https://www.rubegoldberg.com/>



# Robotics

The purpose of this document is to give you general guidelines and procedures for how the Robotics Competition will work so that you can be prepared for the season. This document will NOT provide instructions to complete the robot, nor the rules of the competition.

## I. Divisions

We will have both a high school and middle school division. A middle school team is defined as a team with students from 5<sup>th</sup> to 8<sup>th</sup> grades and a high school team is defined as a team with students from 7<sup>th</sup> to 12<sup>th</sup> grades. High school students (9th through 12 grades) can only compete at the high school division level, while middle school students can compete at either the high school or middle school division level, at the school's discretion. A student can only register to compete in **one** division.

## II. Teams

A team may consist of 2-6 students. Experience has shown that 3-4 students per team is a good size. Each team must have its own robot; teams may not share robots during competition. Schools may have more than one team. Each school that registers by the registration deadline is guaranteed up to two high school teams and two middle school team slots in the competition, more competition slots may be available after the registration deadline on a first come first served basis. A maximum of 24 slots per division will be available for the 2017 / 2018 season.

## III. Kick Off

The Kick Off event will be a day-long event in which the specific rules for the competition, the game board design and the scoring will be announced. Kick Off is designed to be a fun event where mentors and students come together to get to know each other and have questions answered, view the game board and learn the competition rules. There is no competition during Kick Off. Kick Off needs to be as early as possible in the school year but no later than 6 weeks prior to Competition.

It may be beneficial to bring your robotics kit and laptop (and possible an extension cord and power strip) to Kick Off. There are always people willing to help new schools get started.

## IV. Competition

We will have a competition for both middle and high school divisions. A competition is a day-long event in which the teams from the schools compete for both team and school awards.

Each team will participate in a minimum of four placement matches. The top eight teams will compete in an elimination tournament to determine the placement. The elimination tournament will begin with two matches consisting of the 1<sup>st</sup>, 2<sup>nd</sup>, 7<sup>th</sup> and 8<sup>th</sup> teams and the 3<sup>rd</sup>, 4<sup>th</sup>, 5<sup>th</sup> and 6<sup>th</sup> teams competing against each other. The top two from these matches will compete in a final match for 1<sup>st</sup>, 2<sup>nd</sup>, 3<sup>rd</sup> and 4<sup>th</sup> place.

The object of the competition is to score as many points as possible during each run of each match using programmed autonomous robots to place the scoring elements on the game board according to the competition rules. There will be multiple ways to score and an objective of the teams will be to determine the best strategy to score points using scoring zones, multipliers and bonus objectives using effective design, engineering and programming of their robot. Scoring methods will vary in complexity and most (if not all) will be designed to be accomplished with the use of a maximum of two sensors and simple programming decisions that can be accomplished with the included software of both the LEGO and VEX platforms.

The competition will be held toward the end of the school year preferably after sports seasons have ended. The competition will culminate with an awards ceremony where team members will be awarded individual 1<sup>st</sup>, 2<sup>nd</sup>, and 3<sup>rd</sup> place medals and schools will be awarded State Champion and Runner Up trophies, per division. If a single school wins both 1<sup>st</sup> and 2<sup>nd</sup> places no Runner Up trophy will be awarded.

## V. Match

A match is a set of three 60 second runs where four teams/robots try to score points simultaneously. Before each of the three runs the robots will be placed in the starting zone and the game board reset according to the rules of the competition. During each run the robots may be restarted in the starting zone according to the rules of competition. At the end of the three runs the match is finished and match scores will be tallied according to the rules of the competition. Match scoring will be as follow:

- First: 4000 + points scored on game board
- Second: 3000 + points scored on game board
- Third: 2000 + points scored on game board
- Fourth: 1000 + points scored on game board

During a match only three students per team may be at the game board at a time. If a team has more than three students then they may swap positions between runs.

## VI. Game Board

The game board is the field on which the competition is played. Game boards will be different each year and will be played with different scoring elements, layouts, multipliers, bonuses and rules. The game board will be a white 8' X 8' field with the perimeter of the field bounded by a 1"

black border. The game board has four color coded starting zones connected to the outside of the field of play. Competing teams will have a designated starting zone at the beginning of each match. Other elements of the game board will be defined in the competition rules.

## VII. Starting Zone

Each robot/team will start a match in a designated starting zone. The starting zone will be a 12” X 12” connected to the game board. The robot must fit completely within the bounds of the starting zone (this includes attachments and wires; nothing can hang over the sides of the starting zone.) The maximum height of the robot will be determined by the competition rules.

## VIII. Competition Rules

The competition rules vary year to year, as do the scoring elements, rules and game board design; as such these rules are not defined in this document. The competition rules will be published as soon as possible but no later than Kick Off. The rules committee is responsible for the specific rules of the competition each year. The competition rules govern the scoring, game play, game board design, and interaction of the robots on the game board.

### Robots

Robots may be built from one of the following platforms:

- LEGO EV3 (<https://education.lego.com/en-us/middle-school/shop/mindstorms-ev3>)
- LEGO NXT (older model)
- VEX IQ (<https://www.vexrobotics.com/vexiq/products>)

In addition to the robotics kits listed above, the following parts may also be used in the construction of the robot:

- Any non-motorized LEGO part (standard or Technic)
- Any non-motorized VEX IQ part
- Most 3rd party sensors compatible with LEGO or VEX (note - a sensor from an older platform may be used with a newer platform, as long as physical modification to the sensor is not necessary)

For a part to be permissible, the following must be true:

- It must be commercially available (Any team can buy the part / sensor in an unmodified form)
- It must not break the 4 motor, 4 sensor, 1 battery limit.
- It must not require an adapter, glue, tape, or adhesive to make work with a particular

platform

- It must not require modification to work with a given platform
- It must not be able to be used for remote control -- even if the team did not install it for that purpose. These include (but are not limited to) IR sensors and sound sensors.

Robots must be contained entirely within the starting zone (this includes any cables and attachments) and meet any height requirements defined by the competition rules at the beginning of each start during a match run. Robots can be modified at any time during the competition, including during a run, but still must be contained entirely within the starting zone.

During a match the robot can have at most four motors and four sensors. More can be brought to the match and swapped as the team desires, but only four of each at a time may be connected.

After competition rounds begin, all robot programming must be limited to a physical cable; any wireless connectivity to the robot such as WiFi, infrared or Bluetooth is prohibited.

# Math Bowl (MS & HS)

Math Bowl is a team event. NO calculators may be used at any time.

## I. Teams

- There will be both a high school and middle school division. A middle school team is defined as a team with students from 6<sup>th</sup> to 8<sup>th</sup> grades and a high school team is defined as a team with students from 7<sup>th</sup> to 12<sup>th</sup> grades. High school students (9<sup>th</sup> through 12 grades) can only compete at the high school division level, while middle school students can compete at either the high school or middle school division level, at the school's discretion. A student can only register to compete in **one** division.
- Teams will consist of a minimum of 3 students with a maximum of 4 competing at a time.
- Teams are allowed to make substitutions between rounds.
- For an extra fee, a school may have an additional Math Bowl team as long as the first team has at least 4 players. Players cannot switch teams during that day's tournament. Team rosters will be given to the coordinator/host of the day's tournament. A school may only advance 1 team to state competition. At that point any of their students listed on their overall roster is eligible for the state team.

## II. Competition

- A competition will be 3 rounds as described below. All the teams at the event will be given the same problems at the same time. Schools are not competing against just the teams in their room, but rather all the teams at the event.
- **NO calculators allowed at any time!!!**
- **Round 1: Individual Quiz**  
Each student will take the same individual test. Students will have 30 minutes to complete the test. This **MUST** be done individually with no communication between students and coaches at all. Each correct answer will earn 10 points. The top 3 scores from each team will count in the overall score.
- **Round 2: Team Quiz**  
The 4-student team will be given 10 problems to solve. They will have 30 minutes in which to solve the "test". The team may work together or separately to solve the problems, but only 1 answer sheet per team will be turned in. All answers will be turned in on an "Answer Sheet" with the team's name clearly written on it. All

work must be stapled to the back of the answer sheet. Correct answers will earn 6 points for a total of 60 points. No partial credit will be given.

- **Round 3: Relay**

Each team member will be given a sheet containing 12 problems in sets of 3. After the first problem, the answer to the previous problem in the set must be used to answer each subsequent problem. Teams may work together or individually. Only 1 “Answer Sheet” will be turned in. All answers will be turned in on with the team’s name clearly written on it. All work must be stapled to the back of the answer sheet. Teams have 10 minutes to complete all problems in this round. (No bonus for finishing early.) Points are only earned if answers are correct in consecutive order.

Points earned are as follows:

2 points for the first answer correct

5 points for the first 2 answers correct

10 points for all 3 answers correct

- Break: a 10-minute break will be taken between each round. Teams may at this time substitute and coaches can talk to their students.

### III. Rooms

- Hosts are to be sure that there is enough space for more than 1 team per room.
- Teams should be able to work quietly together but mindful that other teams are in the room and they could be overheard.)
- A moderator from the GICAA or a school that is not in the room will be in the room at all times.

### IV. Scorers

Between Rounds the Answer Sheets will be given to the Scorers. Two teachers (from different schools) as well as a GICAA representative will “grade” the Answer Sheets. A running total of points will be kept.

### V. Winner

The team with the most total points will be declared the Champion and receive a trophy. The second-place team will be declared the Runner-Up and receive the runner-up trophy. (If a single school wins both 1<sup>st</sup> and 2<sup>nd</sup> places no Runner-Up trophy will be awarded.) This will be the

same for High School and Middle School.

## VI. Tiebreaker

In the event of tie between the top 2 teams, the 4th individual score will be used.

## VII. Exhibition Round

After lunch an Exhibition Round between the top scoring students from Round 1 will take place in a buzzer format. Audiences will be allowed to view this match. The top 3 scorers will earn individual medals.

# History Bowl (HS & MS)

## I. Teams

- Teams will consist of a minimum of 3 students with a maximum of 5 playing at a time.
- Teams are allowed to make substitutions at between periods.
- For an extra fee, a school may have an additional History or Math Bowl team as long as the first team has at least 5 players. Players cannot switch teams during that day's tournament. Team rosters will be given to the coordinator/host of the day's tournament. A school may only advance 1 team to state competition. At that point any of their students listed on their overall roster is eligible for the state team.

## II. Matches

- There will be 3 periods per round:
  - **Period 1** (Tossup): Ten toss up questions made up of 2 Biblical, 4 American, and 4 World History  
The questions will be called out and team members will buzz in to answer. Any team member may answer. A team receives 10 points per correctly answered question.
  - **Period 2** (Speed): The team that is behind will be allowed to choose between 2 categories. (Note: If no team is behind then a coin toss is used to determine first pick) Then they will have 120 seconds to answer 10 questions from that category. The other category will be for the other team. Only answers from the captain will be accepted, but all team members may call out answers to him/her. All questions answered incorrectly will go over to the other team at the end of the allotted time and thus may be “stolen”. Then the other team will have their set of questions, with incorrect answers allowed to be “stolen”.  
Special note: Questions not called out by the moderator cannot be “stolen”; however, if in the opinion of the moderator a team makes little to no effort to attempt to answer the questions, then ALL 10 questions will be given to the other team.  
Teams receive 5 points per correctly answered question.
  - **Period 3** (Bonus): Six toss up questions with 2 related bonus questions for each correctly answered toss-up question made up of 2 Biblical, 2 American, 2 World History  
If bonuses are answered incorrectly, they will be bounced back to the other team for an opportunity to answer. Teams receive 10 points per



correctly answered toss-up and bonus question.

- Each round will generally last 25-30 minutes.
- Teams will play 3 rounds of Pool Play then the top 4 teams will move to the Semi-Final Round. The top two teams will play head to head in the Final Round.
- Teams may substitute students only between periods.

### III. General Rules

- Each team will supply their own buzzer system at region and state meets if needed
- Seventh through twelfth grade students are eligible for high school competition, and special requests will be considered for sixth graders.
- All teams will compete in region. (The High School division will consist of only a state Tournament unless participation warrants a change.) The GICAA will determine how many teams go to state based on participation
- The GICAA will purchase all Region and State questions and supply region hosts with the questions and format.
- Score checks will be made between each period and each coach/team captain may request one additional score check per round.
- Cell phones or other electronic devices are to be turned off, by players, spectators and coaches during competition.
- Reference books, text books, magazines, etc. are not permitted during competition.
- Each school will supply their own paper/pens/pencils for competitions.
- At no time will opponents display any unsportsmanlike conduct towards each other. The moderator will deduct 10 points after the first warning to the team displaying the unsportsmanlike conduct.
- Buzzer systems can be found at:  
[www.andersonbuzzersystems.com/productoverview.html](http://www.andersonbuzzersystems.com/productoverview.html)

### IV. Tossup Question Procedures

- Players from either team may answer the toss-up questions.
- Players must buzz in within 5 seconds of the end of the question being read.
- Players have 3 seconds to answer once the moderator has recognized him/her.
- Toss-up questions are only read once.
- If a completed toss-up question is answered incorrectly by the first team, the opposing team may still buzz in within 5 seconds and attempt to answer.
- If a toss-up question is interrupted and answered incorrectly, the reader will pick up at a logical place and finish the question for the opposing team only.
- No points will be subtracted if the interrupted toss-up question is answered incorrectly.

- There will be no pauses nor will a break be allowed while answering a toss up question.
- On toss up questions, players may only engage in non-verbal, non-written conferral with teammates only (no spectators, alternates, coaches) as long as it doesn't involve conveying the answer.
- If the moderator accidentally provides the correct answer on a toss-up question after the incorrect answer is given, that toss-up question will be eliminated and another toss up question will be given to the opposing team only.

## V. Bonus Question Procedures

- When answering a toss up question correctly, the team earns the first opportunity to answer a two part bonus question.
- Players on both teams may consult one another during bonus questions for 5 seconds, unless it is a math computation question, in which case, 15 seconds is allowed.
- Each part of the bonus question will be read only once and will be answered before moving on to the next part of the question.
- Team captains will answer bonus questions unless he/she designates another team member to answer, but answers must still be given within the 5 second answer time.
- If someone other than the team captain is giving an answer without the captain's permission, the moderator will look directly at the captain and ask for an answer. If someone hits the buzzer, it will still be up to the captain to answer.
- Each bonus part answered incorrectly or not answered by the team earning the bonus will be bounced back immediately to the opposing team. The opposing team captain must answer within 3 seconds after the moderator offers the bonus to him/her. If the captain defers, the answer must be given immediately by the player to whom the captain defers.
- If the moderator accidentally provides the correct answer on a bonus question after the incorrect answer is given, that bonus question will be eliminated and another bonus question will be given to the opposing team only.
- A player may give two pieces of information in relation to the "creator-creation" rule. Example: *The Great Gatsby* is one answer; *The Great Gatsby by F. Scott Fitzgerald* is two answers and is correct according to the rule.
- Each bonus question is worth 10 points per part for a total of 20 points.

## VI. Ties within a Round

Ties within a round will be settled by extra toss-ups (as in period 1). One toss-up question will be read at a time until a team scores to end the round.

## VII. Protests

Protests must be communicated verbally by either the coach or team captain and must be settled before the round progresses to the next toss up question.

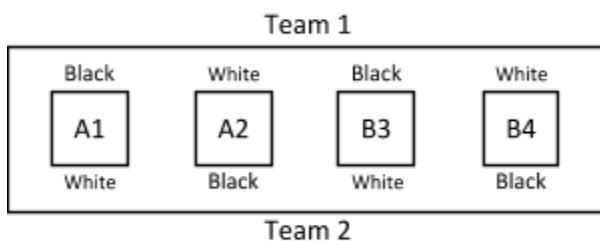
## VIII. Overall Ranking

- Win-loss record
- Head-to-head (for tied teams)
- Total points (for tied teams)

# Chess

## I. Team Summary

1. Each school shall be permitted to enter one high school team and one middle school team...more teams will be allowed if we have room.
2. A team must enter in the high school division if any one player on the team (active or alternate) is currently in 9<sup>th</sup> grade or higher.
3. A team may enter in the middle school division if all players on the team are in 5<sup>th</sup> through 8<sup>th</sup> grades. However, any number of middle school aged students are permitted to play in the high school division.
4. Each team must have a minimum of four players. A team may have two alternates
5. On sign in, the coach will assign each of his players an 'A' rank or a 'B' rank. A minimum of two players must be designated as an 'A' ranking. Any number of the remaining players (active or alternate) may be ranked as 'B'. Each player will be given a lanyard, which will note their name, school, and designated ranking.
6. Once a player has received a designation, the designation is fixed for the duration of the event (players cannot be changed from "A" to "B")
7. Player seating for the four non-playoff rounds shall go as follows:
  - a. Each table will have four chess sets, two assigned as "A" and two assigned as "B" (the numbers are not used until the playoff matches.) – see image below.
  - b. "A" designated players may only play at "A" designated chess sets. "B" designated players may only play at "B" designated sets.



- c. Before the round begins and before the team enters the play area, each team will decide which four players will play during that round (if a team has alternates available). The players will decide who will play as white and which will play as black for both “A” and “B” designations, and will indicate their decisions by wearing lanyards of the appropriate color.
- d. Once a team has made their player and color decisions and has entered the play area, those decisions are set for the round (i.e. – players may not change their positioning once they observe their opponent’s positioning)

## II. Event Summary – Part 1

- 1. The 1<sup>st</sup> half of the event will be made up of four rounds, following a Swiss format, where teams will play other teams with similar records.
- 2. Round 1: Teams will be paired against other teams, selected at random.
- 3. Rounds 2, 3, and 4: Teams will be paired against other teams based on their scores from the previous rounds.
- 4. Each team’s score for the round is the sum on the result of all four games:
  - a. Each win scores 2 points
  - b. Each stalemate scores 1 point
 i.e., if a team wins two games, loses one, and gets into a stalemate in one, that team would score 5 points for that round. The other team would score 3 points for that round (two losses, one win, and one stalemate)
- 5. At the end of four rounds, the teams will be ranked from highest to lowest scores.
- 6. Ties are broken by calculating the team’s “Strength of Schedule” – this is the sum of the scores of the four opponent teams that the team played throughout part one of the event.
- 7. If there are an odd number of teams entered into the tournament, the team with the lowest ranking will receive a bye each round. That team will not play in that round and will score 5 points for that round. No team will receive more than one bye.

## III. Event Summary – Part 2:

- 1. The top four teams from part 1 will play two additional rounds, in a single elimination tournament.
- 2. The semi-final round: The top ranked team (1) will play the fourth ranked team (4). The second rank team (2) will play the third ranked team (3).
- 3. In the playoff rounds, seat selection will go as follows:

- a. Before entering the playing area, “A” designated players will decide which player will play at set one and set two. “B” designated players will decide which player will play at set three and set four. Players will wear lanyards that indicate their set selections. Once teams enter the playing area, teams may not change their selections.
- b. Players do NOT pre-select colors in the same manner as rounds one through four. Instead, they will follow these steps:
  - i. Step 1: Once both teams are standing at the table, Players A1 and A2 from the higher-seeded team will sit at the designated numbered sets and select which colors they wish to play (one will play white, the other will play black), rotating the sets as necessary.
  - ii. Step 2: The opposing team’s A1 and A2 players will sit at the designated numbered sets.
  - iii. Step 3: Players B3 and B4 from the lower-seeded team will repeat the process, sitting and selecting which team member will play white and black.
  - iv. Step 4: Players B3 and B4 from the higher-seeded team will then sit at their designated numbered sets.
4. The round will score in the same way they were scored during part 1 of the tournament (Each win is worth 2 points, stalemates are worth 1 point).
5. Ties will be broken in the following order:
  - a. The winner of match A1
  - b. The winner of match A2
  - c. The winner of match B1
  - d. The winner of match B2
  - e. A single game of blitz chess (5 minutes per side). Each team will select one player to participate in the game. Color will be chosen by lots.
6. The winners of the semi-finals round will then play a final round in the same manner, resulting in first and second place of the event. The losing teams of the semi-final round will play for third and fourth place of the event.

## IV. Game Play Rules

1. Each game must use a chess clock or approved chess clock app. Chess timers are set at 20 minutes per player
2. Each game should be notated by both players, either in a notebook or approved electronic notating device. Notating apps on a tablet or phone are NOT permitted.
3. Unless a tablet or phone is going to be used as a chess timer, all electronic devices must be turned OFF while in the chess play area. Any player using a phone or tablet after

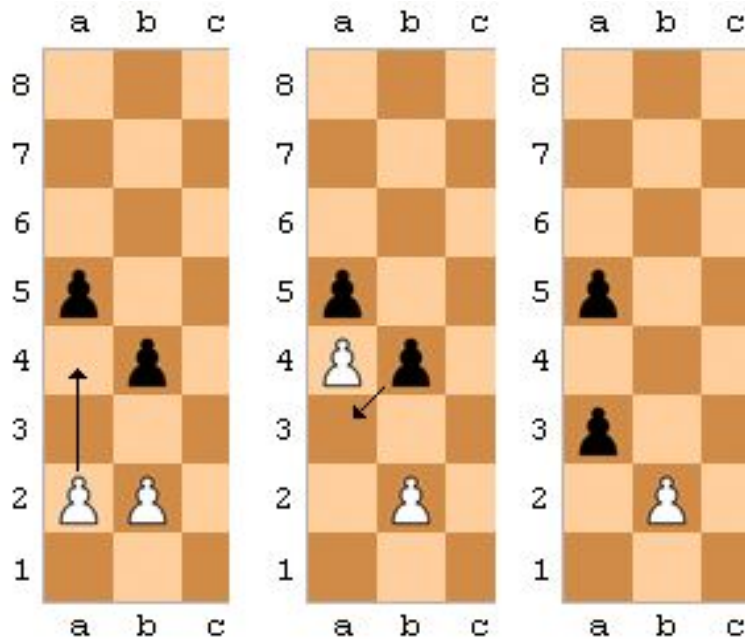
instructed to turn them off by the head referee may be asked to forfeit that match, at the discretion of the head referee.

4. Play will begin for the round when announced by the head referee.
5. There is no talking between team members during the round.
6. Players will follow the “touch” rule.
  - a. A player may only touch the board or a piece on his turn
  - b. If a player touches a piece and the piece can be moved legally, he must move it.
  - c. A piece that is off-center may be adjusted if the player first asks the opposing player
  - d. A player may never touch his opponent’s pieces, unless to remove one from the board after capturing it.
7. There is to be minimal talking between opposing players during a match.
8. If a player has any question about a move, the state of the board, or has any issue with his opponent’s play etiquette, he is to raise his hand and request help from the referee.
9. If a referee acknowledges a mistake on the game board (such as an undiscovered check), he will use the game notation to reverse moves back to where the mistake occurred. If there is a discrepancy between the two notations, he will reverse moves back at this discretion.
10. Referee’s decisions are final. If a player is causing a disruption, purposefully tipping boards, or attempting to cheat in any way, the referees will instruct that player to leave the play area and they will forfeit the match.
11. A game is over under ANY of the following conditions:
  - a. A player loses by checkmate – that player’s king has no legal move and is in check. In this state, the opponent wins and scores 2 points, the player, 0 points.
  - b. A player is in stalemate – that player does not have a legal move with any piece. In this state, both players tie, and each scores 1 points.
  - c. A player’s clock expires – that player runs out of time. In this state, the opponent wins and scores 2 points, the player, 0 points.
12. Once a game is completed, the players will raise their hand to call for a referee to record the results. Once the results are recorded, the players must leave the playing area.

## ***V. Special Movement Definitions***

1. King-side castling: the king may move two spaces toward the king-side rook and the rook can move to the space immediately to the left of the king if all the following are true:
  - a. The king hasn’t been moved previously
  - b. The king side rook hasn’t been moved previously

- c. There are no pieces between the king and rook
- d. The king doesn't move through or into check when moving two spaces to the left.
2. Queen-side castling: All rules are identical to king-side castling, with the following differences:
  - a. The king moves two spaces toward the queen side rook.
  - b. The queen side rook is moved to the space immediately to the right of the king.
3. En Passant: This is a special pawn capture move, as follows:
  - a. A player performs the two-space move off a pawn's starting space.
  - b. An opponent's pawn is on the fifth rank and on a file adjacent to pawn that was just moved two spaces.
  - c. If both above statements are true, the opponent may capture the pawn as if the pawn had only moved one space. See the illustration below:



## VI. Points & Medals

- Points will be awarded as follows:
  - 2 points for a win
  - 1 point for a stalemate
- Medals will be given to all undefeated students and to all the team members of the winning school.
- A championship trophy will be given to the highest scoring high school team. A runner-up trophy will be given to the second highest.



## VII. Chess Etiquette

(From: 101ChessTips.com & Internet Research By: "KingsEnemy")

There are some official and unofficial rules of etiquette in the game of chess. The general theme of chess etiquette is to be a good sport and to be respectful. Some of the more common official rules of etiquette are as follows:

- Every game must begin and end with the players shaking hands.
- Between the two handshakes, no talking is permitted. "Check" need not be said. Players are responsible for noticing where all of the pieces on the board are located, and what threats are pending.
- Never do anything to distract any other player in the tournament, especially your opponent.
- Always use the "touch move" rule. (The touch-move rule in chess specifies that, if a player deliberately touches a piece on the board when it is their turn to move, then the player must move or capture that piece if it is legal to do so.)
- If an illegal move is made, the tournament director should be summoned. In a tournament using a "Sudden Death" time control, the other player receives an extra two minutes when one player makes an illegal move.
- Never gloat over a victory, or become despondent or hostile following a defeat. It is always best to analyze the game with your opponent, after the game ends, and in a different room from where you played. Leave the playing room quietly when you finish so as not to distract the other people who are still playing.
- Never comment on a game that is in progress, whether the game is yours or one that you are just watching.

# Quiz Bowl

## I. Teams

- Teams will consist of a minimum of 3 students with a maximum of 5 playing at a time.
- High School: 7th-12th grade  
Middle School: 5th-8th grade
- Teams are allowed to make substitutions at halftime (after 8 questions).
- For an extra fee, a school may have an additional Quiz Bowl team as long as the first team has at least 5 players. Players cannot switch teams during that day's tournament. Team rosters will be given to the coordinator/host of the day's tournament. A school may only advance 1 team to state competition. At that point any of their students listed on their overall roster is eligible for the state team.

## II. Matches

- There will be 16 toss-up questions per round plus a two part bonus question for each correctly answered toss-up. If bonuses are answered incorrectly, they will be bounced back to the other team for an opportunity to answer.
- Competitions will be set up as round robins, unless otherwise stated.
- Each round will generally last 25-30 minutes.

## III. General Rules

- Each team will supply their own buzzer system at region and state meets if needed
- All teams will compete in region. The GICAA will determine how many teams go to state based on participation
- The GICAA will purchase all Region and State questions from the NAQT and supply region hosts with the questions and format.
- Score checks will be made at half time and each coach/team captain may request one additional score check per round.
- Cell phones or other electronic devices are to be turned off, by players, spectators and coaches during competition.
- Reference books, calculators, etc. are not permitted during competition.
- Each school will supply their own paper/pens/pencils for competitions.
- At no time will opponents display any unsportsmanlike conduct towards each other. The moderator will deduct 10 points after the first warning to the team displaying the unsportsmanlike conduct.

- Buzzer systems can be found at:  
[www.andersonbuzzersystems.com/productoverview.html](http://www.andersonbuzzersystems.com/productoverview.html)
- Study questions can be found at: [www.naqt.com/YouGottaKnow](http://www.naqt.com/YouGottaKnow)

#### IV. Tossup Question Procedures

- Players from either team may answer the toss-up questions.
- Players must buzz in within 5 seconds of the end of the question being read, unless it is a math computation question, in which case, players must buzz in within 15 seconds of the end of the question.
- Players have 3 seconds to answer once the moderator has recognized him/her.
- Toss-up questions are only read once.
- If a completed toss-up question is answered incorrectly by the first team, the opposing team may still buzz in within 5 seconds and attempt to answer.
- If a toss-up question is interrupted and answered incorrectly, the reader will pick up at a logical place and finish the question for the opposing team only.
- No points will be subtracted if the interrupted toss-up question is answered incorrectly.
- There will be no pauses nor will breaks be allowed while answering a toss up question.
- On toss up questions, players may only engage in non-verbal, non-written conferral with teammates only (no spectators, alternates, coaches) as long as it doesn't involve conveying the answer.
- If the moderator accidentally provides the correct answer on a toss-up question after the incorrect answer is given, that toss-up question will be eliminated and another toss up question will be given to the opposing team only.
- A player may give two pieces of information in relation to the “creator-creation” rule. Example: *The Great Gatsby* is one answer; *The Great Gatsby by F. Scott Fitzgerald* is two answers and is correct according to the rule.
- Each toss up question is worth ten points.

#### V. Bonus Question Procedures

- When answering a toss up question correctly, the team earns the first opportunity to answer a two part bonus question.
- Players on both teams may consult one another during bonus questions for 5 seconds, unless it is a math computation question, in which case, 15 seconds is allowed.
- Each part of the bonus question will be read only once and will be answered before moving on to the next part of the question.
- Team captains will answer bonus questions unless he/she designates another team member to answer, but answers must still be given within the 5 second answer time.

- If someone other than the team captain is giving an answer without the captain's permission, the moderator will look directly at the captain and ask for an answer. If someone hits the buzzer, it will still be up to the captain to answer.
- Each bonus part answered incorrectly or not answered by the team earning the bonus will be bounced back immediately to the opposing team. The opposing team captain must answer within 3 seconds after the moderator offers the bonus to him/her. If the captain defers, the answer must be given immediately by the player to whom the captain defers.
- If the moderator accidentally provides the correct answer on a bonus question after the incorrect answer is given, that bonus question will be eliminated and another bonus question will be given to the opposing team only.
- A player may give two pieces of information in relation to the "creator-creation" rule. Example: *The Great Gatsby* is one answer; *The Great Gatsby by F. Scott Fitzgerald* is two answers and is correct according to the rule.
- Each bonus question is worth 10 points per part for a total of 20 points.

## VI. Ties within a Round

Ties within a round will be settled by extra toss-ups. One toss-up question will be read at a time until a team scores to end the round.

## VII. Protests

Protests must be communicated verbally by either the coach or team captain and must be settled before the round progresses to the next tossup question.

## VIII. Overall Ranking

- Win-loss record
- Head-to-head (for tied teams)
- Total points (for tied teams)

# Lincoln-Douglas Debate

For the 2018-19 school year the GICAA will host a Lincoln-Douglas Debate tournament. The GICAA will follow the format, rules, and resolutions of the NCFCA. From NCFCA handbook (edited to reflect GICAA event)

## A. Style

1. Delivery. Delivery should be civil and comprehensible. Conversational-style debate is valued.

2. Content. Content of NCFCA debate rounds should be appropriate for general audiences. Content should enhance the judge's understanding of the topic. Explicit material should not be included for shock value. Vulgarity is never acceptable. Discretion should be exercised by students, parents, and coaches when determining material for competition, keeping in mind that NCFCA is a high school league.

3. Reasoning. Arguments should be supported with what a general listener would consider "good reasons." Analysis, explanation, and appeals to common sense are considered appropriate argumentative strategy.

4. Evidence. Use of evidence and support adds validity to the advocate's arguments. Further guidelines regarding evidence and ethics are in the NCFCA Evidence and Ethics Guidelines posted on the NCFCA website.

a. Debaters should be prepared to provide the full citation of sources, source qualifications, and publication dates to enable clash over evidence quality.

b. Debate is a verbal activity; exhibits or visual aids are not permitted.

c. During their own speaking time or prep time, a team may request to see evidence which has been presented by the opposing team.

d. In the rare instance that a judge has a question about the evidence presented, the judge may request to review it for clarification or accuracy at the end of the round by speaking with a GICAA administrator. Evidence requested must have been actually presented and read in the round.

October 2017 © NCFCA Tournament Rules 2017-2018 Page 8 of 11 e. No "outside the round" discussion is allowed between the debaters and the judge regarding evidence or the round itself.

## B. Structure

1. Speaker Order/Times. NCFCA debate rounds shall adhere to the structure outlined in the NCFCA Timekeeping Worksheets for Lincoln-Douglas Value Debate found on the NCFCA website.

2. Timekeeping. Tournaments will provide an additional (non-judge) person with a digital timepiece to give time signals for each speech and prep time. No team is allowed to take prep time immediately before cross-examination. Prep time is deducted from the team who speaks next. Complete instructions for timing debate can be found on the NCFCA website.

3. Internet Use. Internet use during the debate round is not allowed; therefore, any item that may have internet access (i.e., computers, cell phones, etc.) may not be used, except with special permission from the GICAA..

4. Audience Influence. An observer may not attempt to influence the outcome of the round in any way. If this behavior is observed, the matter shall be brought to the attention of the GICAA. The GICAA administrator will determine the validity and consequences of the situation.

The format of the round is as follows:

- Affirmative Constructive- 6 minutes
- Cross-Examination- 3 minutes
- Negative Constructive- 7 minutes
- Cross-Examination- 3 minutes
- First Affirmative Rebuttal- 4 minutes
- Negative Rebuttal- 6 minutes
- Second Affirmative Rebuttal- 3 minutes

Prep time: Each debater is allowed 5 minutes of preparation time, which they may use at their discretion

**Resolution 2018-19:(Final wording subject to change)**

***Resolved: When in conflict, governments should value fair trade above free trade.***

# Science Fair

For the 2018-19 School year the GICAA will host a Science Fair for Middle School and Elementary School.

- Each school may send 2 students from Middle School (6th -8th) and 2 students from Elementary School (3rd - 5th).
- Schools are expected to host their own Science Fair in order to determine the students selected to attend.
- The Fair will be held at 1 location and the top 3 placing students in each division (MS & Elem) will receive medals.
- A rubric for judging will be provided.
- Any discipline of science will be allowed.
- More rules to follow...

# Spelling Bee

## I. General Information

- Grades 4<sup>th</sup>-8<sup>th</sup> allowed
- A separate competition will be held for MS (6<sup>th</sup>-8<sup>th</sup> grades) and Elementary (4<sup>th</sup>-5<sup>th</sup> grades)
- Each school will have their own competition and their top two spellers, from each group, will advance to region competition (boys or girls) (Two from 4th/5th & two from 6th - 8th)
- The number of students advancing to State will be adjusted yearly, by the GICAA-the determining factors are the number of regions and how many schools are in the region. (The top 4 per region will be the suggested number)
- If your school plans to advance to Scripps Howard, you must register with Scripps individually
- The spelling competition will be done orally and by Scripps Howard rules.  
<http://spellingbee.com/rules-prizes>
- Words will be obtained by the GICAA from the online version of the Merriam Webster Dictionary and Thesaurus. It can be found here:  
<http://www.merriam-webster.com/> the online version is the final authority and sole source for the spelling words.
- The GICAA will adopt the Scripps National Spelling Bee Eligibility Rule 1:1-13~  
<http://spellingbee.com/node/96#eligibility>  
and the GAE Rules and Regulations~  
<http://pv.gae2.org/content.asp?ContentId=3343>
- A good resource to help with studying spelling words is:  
<http://www.spellingcity.com/>

## II. Scripps

***A speller qualifying for the 2019 Scripps National Spelling Bee (the Bee) must meet the requirements as set forth by Scripps here:***

***<http://spellingbee.com/rules-prizes>***

## III. Pronouncer's Role



The pronouncer strives to pronounce words according to the diacritical markings given to them by the GICAA and taken from the online version of the Merriam-Webster Dictionary.

**Homonyms:** If a word has one or more homonyms, the pronouncer indicates which word is to be spelled by defining the word.

**Speller's requests:** In oral competition the pronouncer responds only to the speller's requests for repetition of the word's pronunciation/phonetics, a definition, sentence, part of speech. When presented with requests for alternate pronunciations, the pronouncer or associate pronouncer checks for alternate pronunciations in Webster's Online dictionary.

**Pronouncer's sense of helpfulness:** The pronouncer may offer word information — without the speller having requested the information — if the pronouncer senses that the information is helpful and the information appears on the information provided by the GICAA or in the Webster's Online Dictionary.

## IV. Speller's Role

The speller makes an effort to face the judges and pronounce the word for the judges before spelling it and after spelling it. The speller while facing the judges makes an effort to utter each letter distinctly and with sufficient volume to be understood by the judge. The speller may ask the pronouncer to say the word again, define it, use it in a sentence, provide the part of speech or provide an alternate pronunciation or pronunciations.

**Misunderstandings:** The speller is responsible for any misunderstanding of the word unless (1) the pronouncer never provided a correct pronunciation; (2) the pronouncer provided incorrect information regarding the definition, part of speech, or language of origin; or (3) the speller correctly spelled a homonym of the word and the pronouncer failed to either offer a definition or distinguish the homonyms.

## V. Judge's Role

The judges listen carefully, determine whether or not words are spelled correctly and uphold the rules. The decisions of the judges are final. There will be three judges including the Pronouncer.

**Misunderstandings:** The judges will not respond to the speller's question(s) about the word and its pronunciation. It is sometimes impossible to detect a misunderstanding until a spelling error has been made, and the judges are not responsible for the speller's misunderstanding.

**Pronouncer Errors:** The judges compare the pronouncer's pronunciation with the diacritical markings in the word list. If the judges feel that the pronouncer's pronunciation does not match the pronunciation specified in the diacritical markings, the judges will direct the pronouncer to correct the error as soon as it is detected.

**Disqualifications for reasons other than clear misspelling:** The judges will disqualify a speller (1) who does not approach the microphone when it is the speller's time to receive the word unless there are extenuating circumstances that, in the judges' sole discretion, merit holding the speller's word in reserve and offering it to the speller after all other spellers in the round have spelled and before the close of the round; (2) who engages in unsportsmanlike conduct; (3) who, in the process of retracing a spelling, alters the letters or sequence of letters from those first uttered; or (4) who, in the process of spelling, utters unintelligible or nonsense sounds.

**Speller activities that do not merit disqualification:** The judges may not disqualify a speller (1) for failing to pronounce the word either before or after spelling it, (2) for asking a question, or (3) for noting or failing to note the capitalization of a word, the presence of a diacritical mark, or the presence of a hyphen or other form or punctuation.

**Protests:** All protests must be made before next student's word is given!

**Alternate Spellings:** From Scripps: Rule 4: Official Dictionary and Source of Words Merriam-Webster Unabridged, available at <http://unabridged.merriam-webster.com>, is the final authority and sole source for the spelling of words; the primary source used to craft the pronunciations, definitions and language origins for the Bee; and the only authority consulted by officials, as well as the sole source used during the Bee to verify the information in our prepared lists. If more than one spelling is listed for a word, any of these spellings will be accepted as correct if the following three criteria are met: (1) the pronunciations are identical, (2) the definitions are identical, and (3) the words are identified as being variants of each other. Spellings having temporal labels (such as archaic, obsolete), stylistic labels (such as substand, nonstand) or regional labels (such as North, Midland, Irish) that differ from main entry spellings not having these status labels will not be accepted as correct.

## VI. End-of-Bee Procedure:

If all spellers in an oral spelling round misspell, all remain in the competition and a new round begins with the spellers spelling in their original order. If only one speller spells correctly in a round, a new one-word round begins and the speller is given an

opportunity to spell the next word on the list (anticipated winning word). If the speller correctly spells the anticipated winning word in this one-word round, the speller is declared the champion. If the speller misspells the anticipated winning word in a one-word round, a new round begins with all the spellers who spelled correctly and incorrectly in the previous round: These spellers spell in their original order. Medals will be awarded to the top two placing students.

# Geography Bee

## I. General Information

- Grades 6<sup>th</sup>-8<sup>th</sup> allowed
- Region Competitions-The GICAA will determine regions and state based on participation
- Answer boxes that will be required at GICAA Geography Bees:  
<http://www.nph.com/nphweb/html/nph/itempage.jsp?itemId=CD-682&nid=src&catalogId=NA&catSecCd=NA&subCatSecCd=NA&subSubCatSecCd=NA>
- Each Region Host will be given the following supplies
  - The Official GICAA Questions
  - Geography Bee Score Sheets
- Each Region Host will need to secure all of the Moderators, Scorekeepers & Room Monitors for their region
- Each Region will have a maximum of Six schools
- Each School will send a maximum of Six students for a maximum of 36 students in one region
- Each Region will have the following breakdown:
  - Three rooms with a maximum of 12 students in each
  - One Moderator per room
  - One Room Monitor per room
  - One Scorekeeper per room
  - Three rounds of 15 questions each will be played for a total of 45 questions in the preliminary rounds presented simultaneously
    - The questions will be broken down as follows:
  - 15 American Geography
  - 15 World Geography
  - 15 Bible Geography
  - Each question will have four answers to choose from of which only one answer is correct (no “all of the above” or “none of the above” questions)
  - Each answer is numbered 1-4 and the each student will need to hold up the coordinating number for the judge to view. The judge will mark the score sheet for each student with either “C” for correct or “I” for incorrect and then let the contestants know when to put their number back in the answer box
  - The answer boxes that will be used at Region and State can be purchased by the schools for practicing/match purposes at:  
<http://www.nph.com/nphweb/html/nph/itempage.jsp?itemId=ACSI-100&nid=src&catalogId=NA&catSecCd=NA&subCatSecCd=NA&subSubCatSecCd=NA>
  - The top 12 students with the highest scores will proceed to the semi-finals. If there are ties in the top 12, then more than 12 can proceed to the semi-finals.
  - Semi-Final questions will consist of 15 questions broken down equally between American Geography, World Geography and Bible Geography

- o The top Six students with the highest scores will proceed to the Final region championship round as well as the Championship for MS Geography Bee in the State. No ties are allowed in the top six, therefore a single elimination round will be played to decide the positions for the tied spots.
- o The Final Round will be in 2 stages: In stage 1, 9 questions will be asked. Students will be placed according to their correct answers. Ties will move on to the “Process of Elimination” round within position. For example, students tied for 2nd will be competing against each other for 2nd and 3rd respectively.  
The top six scorers of the Region Competition will receive a medals.

## II. Geography Bee Flow

### The **Host School**

- o The Host School will need three separate rooms set up for region competition
- o Each room must tables and chairs for the 12 contestants and a moderator’s table with three chairs.
- o The Host School is encouraged to ask the participating schools in their region to be the moderator’s for each of the rooms as well as the scorekeepers
- o The Host School may use people from their school’s administration to act as moderator and scorekeeper. Either is acceptable.

### The **Moderator**-there will be one Moderator for each room

- o The Moderator will Introduce the teams and explain the flow of geography bee
- o Read aloud the questions in the order in which they have been presented
- o Read the question two times
- o Once the moderator is finished reading the question two times, he/she will give say “ANSWER” and they students will pull their answer card for the scorekeeper to see
- o Once the scorekeeper is finished recording answers, the moderator will then give the correct answer to the students and let them know to return their answers to the answer box
- o Then the Moderator will proceed with the next question until the end of the round
- o There will be a 3-5 minute break between rounds to make sure the scorekeepers scores match

The **Scorekeeper**-there will be one Scorekeeper for each room.

- o The Scorekeeper will sit directly in front of the 12 students with the Official GICAA Score Sheet and a copy of the answer key.
- o Once the students are seated, the Scorekeeper will enter in each student's name and school on the score sheet
- o As the questions are asked and the students hold up their answer, the Scorekeeper will mark down each student's answers as they come up. C = correct and I = incorrect.
- o At the end of each round, the scorekeeper will add up how many C's/correct answers each student answered in the total column.
- o Once the scores are tallied, the game can proceed

The **Room Monitor**-there will be one Room Monitor for each room.

- o The Room Monitor is responsible for welcoming the students/observers in the room in an orderly fashion and seat the students at their tables with an answer box
- o The Room Monitor will have a copy of the questions with the answer key
- o They will assist the Moderator with any questions that may arise.
- o The Room Monitor will also keep track of scores
- o The Scorekeeper and Room Monitor will compare scores after every five questions asked to insure accuracy. If there is a discrepancy, it will be double checked with the Moderator and coaches at that time, resolved, then the game can proceed

### III. Championship

The Championship will be hosted by the GICAA. It will be comprised of each region's top six scorers. How the numbers in the competition rooms are broken down will depend on how many regions there are from year to year. There will be no more than 12 contestants in each room and competition will be played out the same way as in region. The top six places will receive a championship medal.

## GICAA Middle School Academic Day

### **Math Bowl, History Bowl, Spelling Bee, Geography Bee**

- One day event
- 7 Regions (Will add more regions as needed)
- 7 areas around the state
- Same regions/areas every year
- No school more than 1.5 hours away from the event
- State championship to be held on Saturday in Central GA

#### **Format of the day**

Morning (9-12)

History Bowl & Math Bowl

Lunch Break

Afternoon (1-3)

Geography Bee & Spelling Bee

(all rules are written out previously in this manual)

## GICAA Elementary Academic Day

### **Quiz Bowl, Spelling Bee, Math Bee**

- One day event
- Region event only 2018-19 (Will add regions as needed)
- Same regions/areas every year
- Strive to have no school more than 1.5 hours away from the event
- No State event

#### **Format of the day**

Morning (9-12)

Quiz Bowl (Team event grades 3-5)

**Lunch Break**

Afternoon (1-3)

Math Bee & Spelling Bee

**Elementary Math Bee:**

- Individual event for grades 3-5
- A school may send 4 students from each grade 3rd, 4th, & 5th
- The students will take 3 grade appropriate tests, each allowing 30 minutes per test with a short break between each test.
- Medals will be given to the 3 highest scorers per grade.
- Tiebreaker: TBD

**Elementary Spelling Bee:**

- Individual event for grades 1-5
- A school may send 2 students from each grade 1st, 2nd, 3rd, 4th, & 5th
- This will be an oral spelling bee using grade appropriate words and the rules listed in this manual under Spelling Bee.
- Medals will be awarded to the top two placing students in each grade.



## GICAA Academic Middle School of the Year Award

- Middle School Math Bowl
- Middle School History Bowl
- Middle School Quiz Bowl
- Middle School Spelling Bee
- Middle School Geography Bee
- Middle School Chess

**The schools who participate in AT LEAST four of the Middle School events will be eligible for the *GICAA Academic Middle School of the Year*.**

The point system will be as follows:

- ❖ Each school will receive 5 points per event entered. (No school will receive more points for entering multiple teams in an event.)
- ❖ The Champion Middle School Team or student will receive 7 points. The runner up will receive 5 points, third place will receive 3 points and fourth place will receive 1 point. These points will go towards the total points for the school they are representing.
- ❖ In individual events (Geography Bee and Spelling Bee) schools may receive points based on all of their students who place 1-4. For example, a school which has students winning first and third in Spelling Bee will be awarded 7 and 3 points respectively.

**The TOP scoring school of all six events above will receive the GICAA Academic Middle School of the Year Award.**